

Argelith Ceramic Tiles, Inc. - Recommended Products for Subaru



Contact

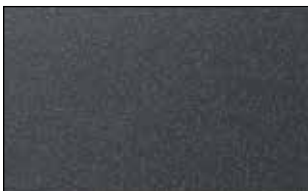
630-444-0665
www.argelithusa.com

Christian Nierenköther
christian@argelithusa.com



Light Grey Fully Vitrified

Sizes:	4x8" 8x8" 12x12"	Service Shop and Service Reception Surface:	R10/R11
		<i>Optional matching cove base</i>	
Thickness:	5/8"		



Anthracite Fully Vitrified

Size:	4x8" 8x8" 12x12"	Service Shop Delineation:	R10/R11
		Service Reception Surface:	R10/R11
Thickness:	5/8"		

Architects' choice of grout - grey color recommended.

R10 is a smoother, easier to clean surface typically used in service shop areas. R11 has a higher level of texture for slip resistance and is typically used in service reception areas.

Technical Values

Water Absorption	<0.10%
Scratch Resistance (Mohs scale)	7
Slip Resistance (R10/R11)	DCOF value \geq 0.42
Chemical Resistance	Acid Resistant Alkali Resistant
Frost Resistance	Exceeds Standards
Break Strength	73.3 N/mm ²
Dimensional Accuracy	+/- 0.2%

All testing performed per or by the TCNA and/or DIN specifications/procedures. Most recent TCNA DCOF test reports are available upon request.