

Argelith Ceramic Tiles, Inc. - Recommended Products for MINI



Contact

630-444-0665
www.argelithusa.com

Christian Nierenköther
christian@argelithusa.com



Light Grey Fully Vitrified

Size: 4x8"
Thickness: 5/8"

Service Shop Surface: R10
Service Reception Surface: R11
Optional matching cove base



Anthracite Fully Vitrified

Size: 4x8"
Thickness: 5/8"

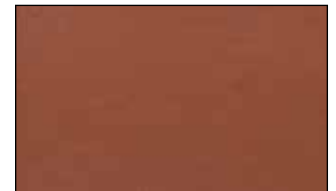
Service Shop Delineation: R11
Service Reception Surface: R11



Kerasig (Black/Yellow Stripe)

8x8" (Width varies based on pattern)
Thickness: 5/8"

Surface: R11
Use around in-ground equipment and elevation changes



Brick Red Clinker

Size: 4x8"
Thickness: 5/8"

Service Shop Surface: R10
Alterations and additions to existing shops

Architects' choice of grout - grey color recommended.

R10 is a smoother, easier to clean surface typically used in service shop areas. R11 has a higher level of texture for slip resistance and is typically used in service reception areas.

Technical Values

	Fully Vitrified Tile		Red Clinker Tile
Water Absorption	< 0.10%	Water Absorption	2.01%
Scratch Resistance (Mohs scale)	7	Scratch Resistance (Mohs scale)	7
Slip Resistance (R10/R11)	DCOF value ≥ 0.42	Slip Resistance (R10/R11)	DCOF value ≥ 0.42
Chemical Resistance	Acid Resistant Alkali Resistant	Chemical Resistance	Acid Resistant Alkali Resistant
Frost Resistance	Exceeds Standards	Frost Resistance	Exceeds Standards
Break Strength	73.3 N/mm ²	Break Strength	34.9 N/mm ²
Dimensional Accuracy	+/- 0.2%	Dimensional Accuracy	+/- 0.5%

All testing performed per or by the TCNA and/or DIN specifications/procedures. Most recent TCNA DCOF test reports are available upon request.