

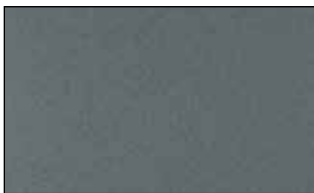
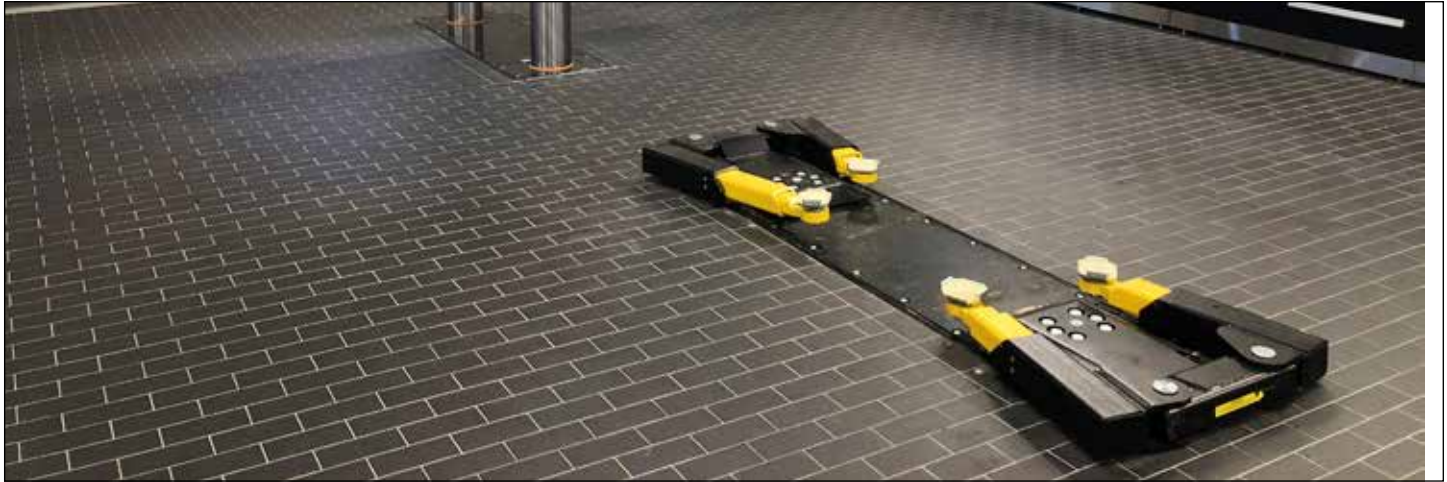
# Argelith Ceramic Tiles, Inc. - Recommended Products for Honda



Contact

630-444-0665  
www.argelithusa.com

Christian Nierenköther  
christian@argelithusa.com



**Titan Grey Fully Vitrified**

Sizes:	4x8"	Service Shop and Service Reception Surface:	R11
Thickness:	5/8"	<i>Optional matching cove base</i>	



**Anthracite Fully Vitrified**

Size:	4x8"	Service Shop Delineation:	R11
Thickness:	5/8"	Service Reception Surface:	R11

*Architects' choice of grout - grey color recommended.*

## Technical Values

Water Absorption	<0.10%
Scratch Resistance (Mohs scale)	7
Slip Resistance (R10/R11)	DCOF value $\geq$ 0.42
Chemical Resistance	Acid Resistant Alkali Resistant
Frost Resistance	Exceeds Standards
Break Strength	73.3 N/mm <sup>2</sup>
Dimensional Accuracy	+/- 0.2%

*All testing performed per or by the TCNA and/or DIN specifications/procedures. Most recent TCNA DCOF test reports are available upon request.*